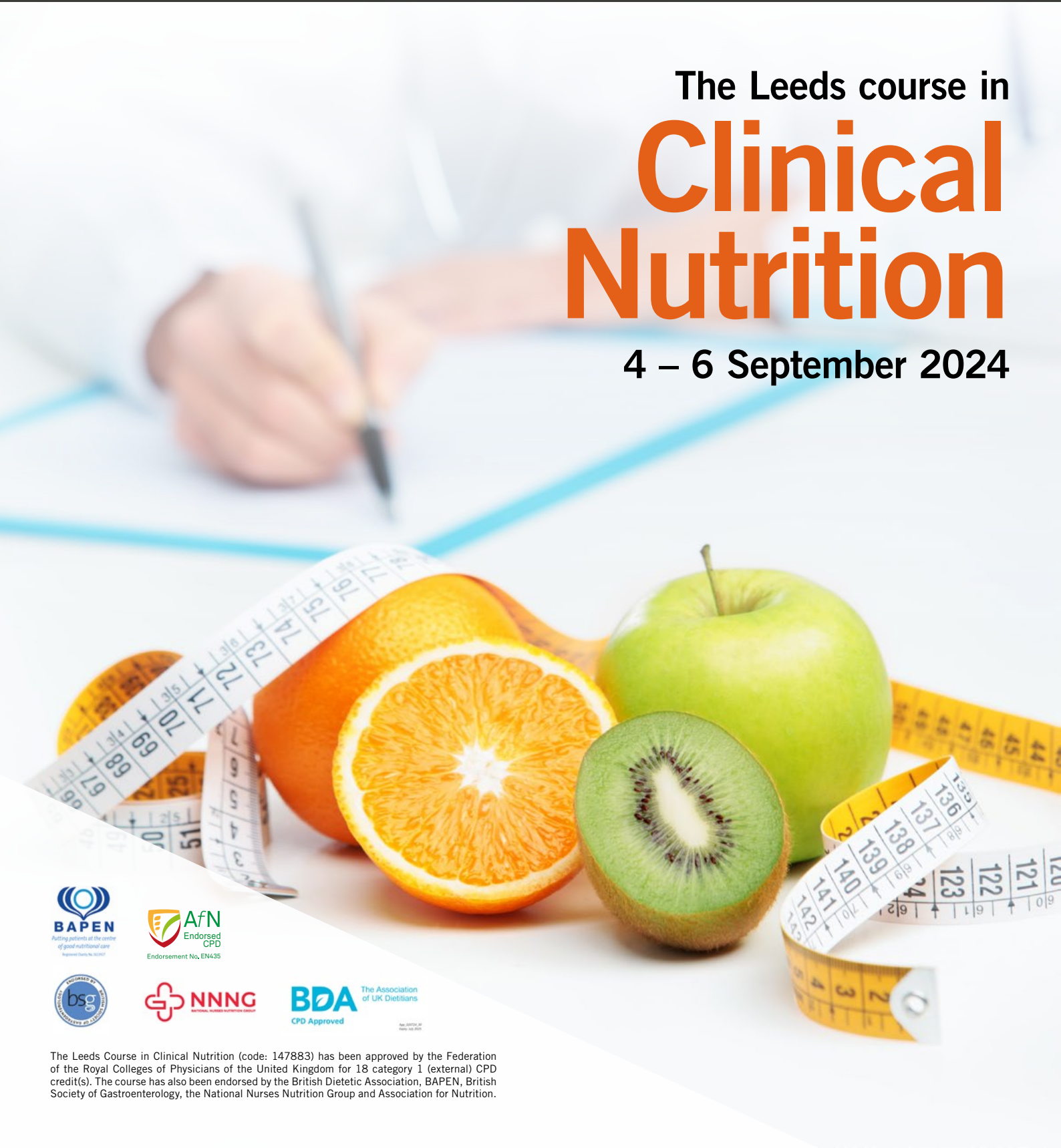




UNIVERSITY OF LEEDS

The Leeds course in Clinical Nutrition

4 – 6 September 2024



The Leeds Course in Clinical Nutrition (code: 147883) has been approved by the Federation of the Royal Colleges of Physicians of the United Kingdom for 18 category 1 (external) CPD credit(s). The course has also been endorsed by the British Dietetic Association, BAPEN, British Society of Gastroenterology, the National Nurses Nutrition Group and Association for Nutrition.

The Leeds course in Clinical Nutrition

Wednesday 4 – Friday 6 September 2024

Course director

Dr Clare Donnellan, Consultant Gastroenterologist, The Leeds Teaching Hospitals NHS Trust

About the course

A three-day course specifically designed to provide a thorough grounding in all aspects of clinical nutrition and:

- summarise national nutrition drivers to provide a foundation for the course
- increase awareness of nutritional compromise and its consequences; give practical guidance on assessment of patients, and discuss particular patient groups (surgical patients, those with irritable bowel syndrome, renal disease, eating disorders and liver disease)
- discuss practicalities of feeding in terms of ethics, different methods of feeding and understand more about different techniques to give artificial nutrition
- establish principles of nutritional importance in extreme clinical situations (short bowel syndrome, refeeding syndrome, parenteral nutrition).

Who should attend?

The Leeds course in Clinical Nutrition is aimed at all professions with an interest in Clinical Nutrition and will appeal to clinicians, dietitians, doctors, hospitals pharmacists, nursing staff and others with interest in patient nutrition.

Product display

There will be a small company product display from the pharmaceutical, equipment and food industries on days one and two of the course.

Please contact Harriet Wills for more details on **0113 343 2494** or email clinicalnutrition@leeds.ac.uk

What our previous delegates say:

"A comprehensive review of theory and practical issues relating to clinical nutrition - this course provides great insights into the work of MDT members."

"Great tips for day to day work life to manage nutrition and hydration of our patients."

"Well run course with plenty of networking opportunities, all presentations and presenters very knowledgeable, friendly and lots of opportunities to ask questions."

Course accreditation

The Leeds Course in Clinical Nutrition (code: 147883) has been approved by the Federation of the Royal Colleges of Physicians of the United Kingdom for 18 category 1 (external) CPD credit(s).

The Leeds Course in Clinical Nutrition (code: 147883) has been approved by the Federation of the Royal Colleges of Physicians of the United Kingdom for 18 category 1 (external) CPD credit(s). The course has also been endorsed by the British Dietetic Association (BDA), BAPEN, British Society of Gastroenterology, the National Nurses Nutrition Group and Association for Nutrition.

BDA endorsement applies only to the educational content of the learning activity.



Wednesday 4 September 2024

- 08.30 Registration and coffee
- 09.00 Welcome and Introduction**
Dr Clare Donnellan, Course Director, Consultant Gastroenterologist, Leeds Teaching Hospitals NHS Trust
- 09.15 Nutrition and risk – what can we do?**
Dr Clare Donnellan, Course Director, Consultant Gastroenterologist, Leeds Teaching Hospitals NHS Trust
- 09.50 Estimating nutritional requirements**
Emma Noble, Senior Specialist Dietitian (Intestinal Failure & Colorectal Surgery) Leeds Teaching Hospitals NHS Trust
- 10.30 Coffee and company product display
- 11.05 Multidisciplinary Team Workshops**
Assessing nutritional status
- Normal BMI
 - Obese
 - Very underweight
- 12.25 Networking Lunch and company product display
- 13.25 Nutrition in IBD**
Dr Peter Mooney, Consultant Gastroenterologist (Nutrition), Clinical Lead for Gastroenterology St James University Hospital, Leeds Teaching Hospitals NHS Trust
- 14.05 Short bowel syndrome**
Dr Cathryn Preston, Consultant Gastroenterologist, Bradford Teaching Hospitals NHS Foundation Trust
- 14.50 Tea and company product display
- 15.20 Ethics of feeding**
Dr Andrew Rochford, Consultant Gastroenterologist, Royal Free London Hospitals NHS Foundation Trust
- 16.10 Nutrition and the liver patient**
Dr Charlie Millson, Consultant Gastroenterologist, York District Hospital
- 16.55 Summary of day one**
Dr Clare Donnellan, Course Director
- 17.00 End of day one
- 19.00 Course dinner

Thursday 5 September 2024

- 09.00 Practicalities of enteral feeding**
Alison Young, Consultant Nutrition Nurse, Liverpool University NHS Foundation Trust
- Workshops
- 09.40 Workshop session 1**
- PEGs/gastrostomy tubes including buried bumpers, measuring tubes etc.
 - NGs, nasal bridles
 - Drugs via NG tubes
 - Jejunal feeding tubes
- 10.25 Coffee and company product display
- 10.45 Workshop session 2**
- 11.35 Workshop session 3**
- 12.25 Workshop session 4**
- 13.10 Networking Lunch and company product display
- 14.10 Nutrition and eating disorders**
Dr Clare Donnellan, Consultant Gastroenterologist, Leeds Teaching Hospitals NHS Trust
- 15.00 Preventing the refeeding syndrome**
Dr Jeremy Nightingale, Consultant Gastroenterologist, St Mark's Hospital, London North West Healthcare NHS Trust
- 15.40 Tea and company product display
- 16.00 Nutrition and the surgical patient**
Mr Dermot Burke, Consultant General and Colorectal Surgeon, Leeds Teaching Hospitals NHS Trust
- 16.40 Summary of day two**
Dr Clare Donnellan, Course Director
- 16.45 End of day two

Friday 6 September 2024

- 08.45 Pharmacy and parenteral nutrition**
Sarah Zeraschi, Consultant Pharmacist Nutrition, Leeds Teaching Hospitals NHS Trust
- 09.25 Nutritional nightmares in gut-brain disorders**
Peter Paine, Consultant Gastroenterologist, Northern Care Alliance NHS Foundation Trust
- 10.25 Coffee
- 10.45 Obesity / bariatric surgery**
Sophia Whittaker, Clinical Specialist Dietitian in Bariatric Surgery, Leeds Teaching Hospitals NHS Trust
- Kullavanijaya International Guest Lecture**
- 11.25 Small bowel transplant**
Dr Charlotte Rutter, Consultant Gastroenterologist, Cambridge University Hospitals NHS Foundation Trust
- 12.15 Networking Lunch
- 13.00 Workshop Session 1**
- Short Bowel Syndrome
 - PN issues – working out requirements
 - Management of abnormal LFTs
- 13.50 Workshop session 2**
- 14.35 Tea
- 14.45 Workshop session 3**
- 15.30 Managing home parenteral nutrition**
Antje Teubner, Associate Specialist Intestinal Failure, Honorary Senior Lecturer University of Manchester, Northern Care Alliance NHS Foundation Trust
- 16.30 End of day three and course

Please note: although we remain devoted to the programme specified, we reserve the right to vary the programme in detail if required to do so by factors beyond our control.

Further details and online registration now available at <https://tinyurl.com/ClinicalNutritionCourse2024>

Further information

Course Fees

The course fee includes the cost of tuition, course materials, lunches, refreshments and the course dinner on Wednesday evening.

NHS/academic fee: **£595**

Standard/other fee: **£775**

Fees are VAT exempt.

A discount fee is available for BSG members. Please contact Harriet Wills if you are a BSG member.

Venue

The course will be held at the Faculty of Engineering and Physical Sciences, University of Leeds, Leeds, LS2 9JT. The University campus is a 20-minute walk from Leeds city train station.

Please note, car parking for visitors is unavailable at the University. The nearest public car park is Woodhouse Lane Multi-Storey, located at LS1 3HQ

Accommodation

Delegates are responsible for organising their own evening meals and accommodation, except on Wednesday when the course dinner is included. A list of hotels close to the University will be provided in the delegate joining instructions.



Course Dinner

The course dinner will be held at a Leeds city centre restaurant and is included in the course fee. This will take place on Wednesday evening and you are responsible for making your own way to and from the restaurant. The dress code is smart casual. If you would like to attend please let us know when booking.

How to Book

To pay via debit or credit card (via our secure Online Store)

1. Visit our Online Store at: <http://store.leeds.ac.uk>
2. Select Conferences and Events in the left-hand navigation bar and 'CPD Faculty of Engineering and Physical Sciences'
3. Select the relevant course, click on 'Book Event' and complete your booking details

To pay via purchase order and invoice

1. Please email us at clinicalnutrition@leeds.ac.uk to request a registration form.
2. Send your completed registration form and purchase order document to cpd@healthcare.leeds.ac.uk

We require all course fees to be paid prior to attendance.

Get in touch

Harriet Wills – Course Coordinator
CPD, Conference and Events Unit
Faculty of Engineering
and Physical Sciences
University of Leeds

+44 (0)113 343 2494

clinicalnutrition@leeds.ac.uk

<https://eps.leeds.ac.uk/short-courses>

[CPD, Conference and
Events Unit, University of Leeds](#)

[@LeedsUniCPD](#)

Terms and conditions for booking

Payment

Payment by debit/credit card should be made at the time of booking via the Online Store. If for exceptional reasons you are unable to book and pay online a purchase order document will be required to support a manual booking process. Our standard payment terms are 30 days from date of invoice however payment must be made prior to attendance. Attendance may be refused if payment has not been received.

Changes made by the University of Leeds

The course programme may have to be re-scheduled or the speakers changed for reasons outside our control. The University of Leeds reserves the right to cancel or postpone a course, in which case fees will be refunded in full. In the event of cancellation, the University will not be held liable for delegates' travel or accommodation expenses.

Where a delegate cancels a registration

For cancellations made within seven days of booking: a full refund is payable unless the course starts within the next seven days, in which case the full fee is payable and no refunds will be made.

For cancellations made after seven days of booking: written cancellations received up to 15 working days before the course will be subject to an administrative charge of 20% of the total fee. Within 15 working days of the course the full fee is payable and no refunds will be made.

For non-attendance: the full fee is payable and no refunds will be made. Appropriate course materials will be sent to the registered delegate.

In the event of cancellation, the University will not be held liable for or refund any incurred travel or accommodation expenses. Substitutions may be made at any time.

Data/Privacy

Your right to privacy is important to us. We will only use your information to provide information on our CPD courses and relevant events. We will not pass your details on to any other organisations. The ways in which your personal data may be used when you provide it to us are defined in our Privacy Notice at <https://eps.leeds.ac.uk/privacy>.

If you have opted in to receive details of future CPD courses from us you can unsubscribe at any time by emailing us at cpd@healthcare.leeds.ac.uk and your details will be removed from our database.



UNIVERSITY OF LEEDS

University of Leeds
Leeds, United Kingdom
LS2 9JT
0113 243 1751
www.leeds.ac.uk