



# Your Offer

---

UNDERGRADUATE 2022



UNIVERSITY OF LEEDS



# Our campus by the city

## Parkinson Building

The iconic landmark building of the University

## Laidlaw Library

Designed for our undergraduate students

## St George's Field

A beautiful green space in the heart of campus

## North-east quarter

Brings together engineering, computing and physical sciences

## The Edge

Swimming pool, gym and sports halls

## Leeds University Union

Shops, cafés, music venues and home to our clubs and societies

## Western campus

Home to our Business School and School of Law

## Leeds train station

Only a 15-minute walk from campus

## Leeds city centre

Only a 10-minute walk from campus

## Leeds General Infirmary

## The Edge

## Leeds University Union

## Western campus

## Parkinson Building

## Laidlaw Library

## St George's Field

## North-east quarter







## Contents

<b>Go further, come to Leeds</b>	<b>4</b>	<b>Finding your new home</b>	<b>22</b>
Welcome to Leeds	5	Choosing your accommodation	23
Your offer explained	6	Our residences	24
Applicant events	7	How to apply	26
Accommodation Viewing Day	7	<b>Campus life</b>	<b>27</b>
<b>Redefining excellence</b>	<b>8</b>	Students' union	30
Research-based learning	9	Sport and fitness	31
Blended learning	10	<b>Our city</b>	<b>32</b>
Your learning environment	11	<b>Wellbeing and support</b>	<b>36</b>
<b>Tailor your experience</b>	<b>12</b>	Support Services	37
The Leeds experience	13	Student mental health and wellbeing	37
Study abroad	14	<b>Next steps</b>	<b>38</b>
Work experience	16	Fees and funding	39
Student enterprise	17	International students	41
Volunteering	18		
<b>Prepare for your future</b>	<b>19</b>		
Leeds for Life	20		
Career development	21		

### IMPORTANT INFORMATION

Information provided by the University, such as in presentations, University brochures and on the University website, is accurate at the time of first disclosure. However, courses, University services and content of publications remain subject to change. Changes may be necessary to comply with the requirements of accrediting bodies or to keep courses contemporary through updating practices or areas of study. Circumstances may arise outside the reasonable control of the University leading to required changes. Such circumstances include industrial action, unexpected student numbers, significant staff illness (where a course is reliant upon a person's expertise), unexpected lack of funding, severe weather, fire, civil disorder, political unrest, government restrictions and serious concern with regard to the transmission of serious illness making a course unsafe to deliver. After a student has taken up a place with the University, the University will look to give early notification of any changes and try to minimise their impact, offering suitable alternative arrangements or forms of compensation where it believes there is a fair case to do so. The latest key information on courses, entry requirements and fees can be found at [courses.leeds.ac.uk](https://courses.leeds.ac.uk). Please check this website before making any decisions.

# Go further, come to Leeds.

Choose to study here and join a welcoming community of like-minded students and outstanding academics.



## Welcome to Leeds

Going to university is an amazing experience. We're really glad you've applied to study with us and we hope you select the University of Leeds as your firm choice.

We've designed this guide to help you make one of the most important decisions in your life that little bit easier. Discover all that we can offer you and what you need to do next.

You'll be part of a prestigious, research-intensive Russell Group university, where you'll gain skills that will be invaluable to you, personally and professionally, for years to come.

It's the whole experience you get at Leeds that makes us different. You'll get the chance to get involved in research and many of our courses give you the opportunity to tailor your experience with discovery modules. You'll also enjoy some of the best university facilities on offer at Leeds and we'll support you every step of the way. And it's all on one campus, in the heart of a thriving, friendly and multi-cultural city.

### Covid-19 updates

We hope that by the time you're ready to start your studies with us the situation with COVID-19 will have eased. We'll continue to review our courses and other parts of the student experience in response to COVID-19 and we may need to adapt our provision to ensure the safety of our students. Keep checking our website for the latest updates at [www.leeds.ac.uk/covid19faqs](http://www.leeds.ac.uk/covid19faqs)

### Explore campus

Take our virtual tour  
[virtualcampustour.leeds.ac.uk](http://virtualcampustour.leeds.ac.uk)

### Talk to us

[study@leeds.ac.uk](mailto:study@leeds.ac.uk)

### Chat to our students

Learn about life at Leeds from current students, through chat, blog posts and live events.  
[www.leeds.ac.uk/linktoleeds](http://www.leeds.ac.uk/linktoleeds)

### Connect with us







## Your offer explained

### Conditional offer holders

If you've received a conditional offer from us, your place here is dependent on you achieving the grades or points (and English language requirement, if applicable) outlined in your offer letter, which you'll have received with this guide.

If you've applied through UCAS, you may receive up to five offers, but you can only accept two – one as your firm (or first) choice and the other as an insurance (or second) choice.

You'll be committed to your firm choice if you meet the grades of your offer, so your insurance choice should ideally be a lower offer than your firm choice – but make sure it's somewhere you'd still be happy to go. Remember, you can't choose between your firm and insurance choices once you get your results.

### Unconditional offer holders

If you've applied through UCAS and you accept an unconditional offer as your firm choice, you will be committed to that university and will not have an insurance choice.

### Deferring your place

If you're considering a change, you'll need to contact your school's admissions team directly. You'll find contact details in the enclosed offer letter.

### How to reply to your offer

If you applied through UCAS, once you've received your offers, you'll need to indicate your firm and insurance choices via UCAS by the deadline confirmed to you by UCAS.

When you accept the University of Leeds as your firm choice, you're guaranteed an offer of a place in our student accommodation as long as you apply by the deadline (see page 23). If you've got any questions about your offer and how to respond to it, contact your school's admissions team. You'll find details in the enclosed offer letter.

If you're an International Foundation Year or intercalating student, or you're coming to Leeds as part of a joint degree, you can accept your offer online at **[acceptonline.leeds.ac.uk](https://acceptonline.leeds.ac.uk)**

If you're an International Foundation Year student, once you have completed your qualifications, you'll also need to email your official grades and IELTS certificate to **[ifyadmissions@leeds.ac.uk](mailto:ifyadmissions@leeds.ac.uk)**

If you're a Study Group student, you don't need to accept your offer because this will be done on your behalf when you're made an offer.



## Find out more

### Applicant events

You may be invited to an offer-holder visit experience where you can learn more about your course, and chat to academic staff and students. It's more in-depth than an Open Day and will either be virtual or on campus.

Look out for more information sent from your academic school.

### Accommodation Viewing Day

This year's Viewing Day is planned for Saturday 19 March 2022. All our residences will be open for you to visit and explore. You'll be able to speak to students about their time in accommodation, see the facilities and meet staff who'll show you around and answer your questions.

Look out for email updates about this event closer to the time.

If you're not able to come to Viewing Day, full details about our accommodation can be found at **[accommodation.leeds.ac.uk](https://accommodation.leeds.ac.uk)**

# Redefining excellence.

Join the next generation of highly skilled, independent critical thinkers – shaping the world around you in years to come.

**Top 100  
university in  
the world**

QS World University  
Rankings 2022



**Top 10  
UK university  
for research  
power**

REF 2014

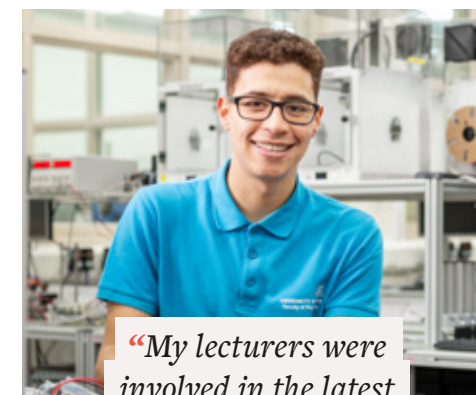
## Research-based learning

Experience the excitement of new discoveries and breakthroughs as they happen.

Research is at the heart of our teaching, so your course will be up to date with the latest developments, designed and taught by inspirational academics who are experts in their field. Together, we'll also explore with you how research has influenced your subject and the research methods that are essential to making advances.

There are lots of opportunities for you to develop your research skills and get involved in the research happening on campus, so you'll experience first-hand how knowledge is created.

Whatever course you choose at Leeds, you'll carry out a research project in your final year, giving you the chance to apply your research skills and make your own discoveries.



*“My lecturers were involved in the latest robotics research, which impacts our lives in a big way. I learnt the theory in the classroom and then applied it practically in the lab.”*

**Jefferson Sanchez**





## Blended learning

Teaching here is designed to be flexible, offering a blend of face-to-face and online learning, so you get the best of both worlds.

Our digital learning environment is interactive and engaging, using the latest multimedia technology to stimulate discussion between you, other students and your tutors as part of a supportive and community-focused experience.

Our campus has some of the best facilities to support you in your studies but you'll also have the freedom to learn online, where and when it suits you and at your own pace.

## Excellent teaching

You'll study among inspirational academics – world experts who share your passion for your subject. They're committed to helping you learn and develop and, in time, become an expert in your own right.

Our staff have been awarded a large number of National Teaching Fellowships, recognising their skills and commitment to outstanding teaching in higher education.

Discovery modules are a great way to tailor your study around your interests or career aspirations, helping you stand out from the crowd when you graduate.

[www.leeds.ac.uk/broadening](http://www.leeds.ac.uk/broadening)

## Your learning environment

You'll find everything you need to support your studies. We're continually investing in our campus – from new laboratories and lecture theatres to one of the most impressive libraries in the UK.

**You'll benefit from a high-quality learning experience, which includes:**

- the latest digital learning technology in some teaching spaces, so you can work with other students and interact with your lecturer
- access to video and audio recordings of most of your lectures and other learning activities through our Virtual Learning Environment
- four libraries on campus, including the purpose-built Laidlaw Library for undergraduate students
- different working environments in our libraries to suit the way you work, including spaces for group work with interactive presentation equipment and silent individual study spaces
- free high-speed wi-fi across campus and 24-hour computer clusters let you study when and where you like on campus
- secure access to your resources, files and software, no matter where you are in the world, with our Desktop Anywhere service
- a dedicated Language Centre for independent study, so you can learn a new language for fun or to enhance your employment prospects
- support for academic skills, including report and essay writing, presenting and time management.



# Tailor your experience.

Explore, grow and develop with an incredible range of opportunities, meaning you really can make your time with us unique.



## The Leeds experience

Don't take our word for it. Find out from our students how they've made the most of their time at Leeds.



### Study abroad

*I went to the University of Adelaide. **It was a fantastic experience.** I travelled and worked and really gained my independence.*

**Ben Barrett**



### Work experience

***Working with people who had lots of experience in industry** just blew me away and it's helped me to become so much more confident.*

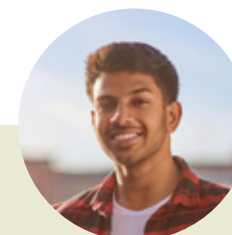
**Ellie Sleightholm**



### Clubs and societies

*The people I met through **joining clubs and societies made my university experience.** Some of my best memories came from just putting myself out there and trying new things.*

**Isabella Bidlake Hull**



### City life

***The campus is really close to the city centre** and I like how handy everything is. I can walk into town to grab some shopping or meet some friends for a bite to eat.*

**Rohan Cheerala**





**Jacob Moorman** – Universitetet i Bergen, Norway

## Study abroad

Studying abroad as part of your degree is a great way to boost your confidence and broaden your outlook. You'll get to experience another culture, make new friends and it's amazing fun.

Most of our courses give you the chance to study abroad by extending your degree by a year. Our university partnerships span the globe, from Norway to Japan. Summer schools are also available for undergraduate students. Programmes last 1 - 8 weeks and destinations include Africa, Asia, Europe, the Middle East, Latin America and North America.

You don't need to be fluent in another language to study abroad. You can choose to go to an English-speaking country or our Language Centre can give you advice on language-learning opportunities before you go.

[www.leeds.ac.uk/studyabroad](http://www.leeds.ac.uk/studyabroad)



*"I went to the  
University of Adelaide.  
It was a fantastic  
experience. I travelled  
and worked and really  
gained my independence."*

**Ben Barrett**



**Kim Maguire** – Monash University, Melbourne, Australia



**Alexandra Farrar** – Universidad Carlos III de Madrid, Spain



**Angelina Smirnova** – Institut National des  
Sciences Appliquées Lyon, France



**Adam Bilbey** – Universidad de Guadalajara, Mexico



**Elizabeth Wilder** – Nanzan University, Nagoya, Japan

**3rd**  
in the UK  
for student  
experience

Times Higher Education  
Student Experience  
Survey 2018

## Work experience

Getting valuable real-world experience looks great on your CV. You'll develop commercial awareness, learn how to build professional relationships, gain the networking skills you'll need for life after university and possibly even get a future job offer.

Most of our courses give you the opportunity to do a work placement. There are lots of ways you can do this – spend a year on a work placement, take a summer internship, or do shorter placements and project work as part of your course. You could choose a placement in the UK or overseas, or take on an ambassadorial role on campus.

Each year our students secure placements with large corporate organisations such as Arla Foods, NHSX, First Direct and Northern Rail, small-to-medium-sized enterprises such as Leeds Playhouse, XR Games and The Meatless Farm, and charities and not-for-profit organisations such as Mind, Great Ormond Street Hospital and Leeds International Piano Competition.

[www.leeds.ac.uk/workexperience](http://www.leeds.ac.uk/workexperience)



*“Working with people who had lots of experience in industry just blew me away and it’s helped me to become so much more confident. It was such a phenomenal experience.”*

**Ellie Sleightholm**



## Student enterprise

Whether you want to learn about being more enterprising or even become an entrepreneur, you can get a head start at Leeds.

If you've got an idea for starting your own business, our start-up support team, Spark, can help you develop your idea into a viable enterprise. You can get business advice, mentoring and access to funding, networking events and bespoke workshops to help you through your entrepreneurial journey.

Our Centre for Enterprise and Entrepreneurship Studies runs enterprise-related discovery modules (see page 10). You'll develop skills in commercial awareness, creative problem-solving, teamworking, leadership and communication – skills top employers look for in graduates.

You could apply for an Enterprise Scholarship to help with business, training and transport costs, and win up to £2,000 to get you started in our annual business plan competition.

[www.leeds.ac.uk/enterprise](http://www.leeds.ac.uk/enterprise)





## Volunteering

You could become one of around 3,500 students at Leeds who make a difference to the lives of others each year. Volunteering is a great way to give something back to the local community, enhance your CV and broaden your life experience, as well as meet people and have fun.

Whether you have a few hours to spare or much more time to volunteer, there's something for you to get involved in. You could support young people in local schools, coach your sport, help refugees or asylum seekers improve their English, get involved in a Leeds University Union volunteering society, or join a great local community project. The Student Ideas Fund is here to support you bring innovative ideas to life.

[www.luu.org.uk/volunteering](http://www.luu.org.uk/volunteering)

# Prepare for **your** future.

Make the most of the opportunities at Leeds, have an amazing experience, and give yourself the skills and confidence to stand out from the crowd.



**5th**  
most targeted  
UK university by  
graduate recruiters

The Graduate  
Market in 2021,  
High Fliers Research



## Leeds for Life

Leeds for Life is the University's commitment to helping you make the most of your time at Leeds. We will empower you to prepare for your future, enabling you to be successful in a way that is meaningful to you.

### Together we will:

- ensure you are valued
- encourage you to reflect on what success means for you
- articulate your skills and attributes
- identify your development needs and empower you to make informed choices now and beyond graduation

We will help you navigate opportunities to gain experience and skills, utilise the flexibility within your course and signpost support services as you need them.

**leedsforlife.leeds.ac.uk**

## Career development

You'll get expert career development support throughout your course, and after you graduate, from dedicated careers and employability teams.

Our staff help you with career choices and options after graduation, as well as offer advice on finding work experience, writing job applications, preparing for interviews and further study.

As well as considering a career-related discovery module (see page 10), you can access one-to-one appointments, events and a jobs site advertising hundreds of vacancies to our students. Leeds is one of the most targeted UK universities by graduate recruiters. There are lots of opportunities for you to talk to potential employers about the career you're interested in.

A dedicated employability team in your academic school or faculty can also give you sector-specific support and advice.

**careerweb.leeds.ac.uk**



Our alumni are actively involved in supporting your studies. Our graduates help our current students through offering internships, work placements and scholarships, talks and presentations and practical careers advice.

**careerweb.leeds.ac.uk**

### Be targeted by top graduate recruiters, including:



Civil Service  
Fast Stream





# Finding your new home.

Choosing a university is also about choosing your new home. You'll meet new people and discover the benefits of living independently. We're here to help you feel safe and at home from day one.



## Choosing your accommodation

Living in University accommodation in your first year is a great introduction to student life. It's a fantastic way to make new friends and experience a new city or even a new country and culture.

Most of our accommodation is off campus, close to the city centre or in the popular student areas of Headingley or Hyde Park – within walking distance or on frequent bus routes to the University.

You can view photos of each residence and find out more information about their size, facilities and location at [accommodation.leeds.ac.uk/residences](https://accommodation.leeds.ac.uk/residences)

We guarantee\* an offer of single University accommodation for your first year (and for all years for international undergraduates), as long as you apply by the deadline.

\* Restrictions apply relating to deadlines, residence and academic offer status. Find out more about our guarantee at [accommodation.leeds.ac.uk](https://accommodation.leeds.ac.uk)





## Our residences

Explore our impressive range of accommodation, from modern, purpose-built apartments to converted mansions. There are catered and self-catered options and residences with en-suite or shared bathrooms.

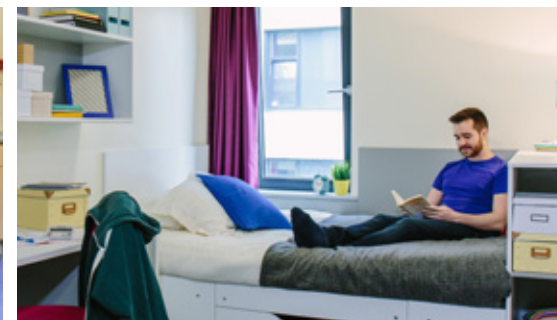
Discover our full range of accommodation online at [accommodation.leeds.ac.uk](https://accommodation.leeds.ac.uk)

### Catered residences

In catered halls your meals are provided – ideal if you don't want to cook for yourself – and the cost is included in your rent, making budgeting easier. All our catered residences have fully equipped kitchens, handy if you want to make any light meals or snacks. If your catered residence is on campus you will be given a pre-paid meal card, allowing you to purchase your meals from the Refectory, right next to the students' union. At Devonshire Hall, our catered off-campus residence, meals are served in the dining hall allowing you to eat socially with your friends.

### Self-catered residences

Self-catered residences are a great alternative. You'll still enjoy the benefits of being part of a student community, but you can prepare your own food, eat when you want and plan your own food budget. If you follow a vegetarian, vegan, kosher or halal diet let us know so we can try to place you with students with similar requirements.



### Accommodation Viewing Day

Planned for Saturday  
19 March 2022





## What's included

Whichever residence you live in, you'll get your own room, which comes with a bed, wardrobe, desk, chair and bookshelves. En-suite rooms also include a toilet, shower and washbasin.

There's a range of facilities available including on-site gyms, music practice rooms, cafés, bars, pool tables and picnic and barbeque areas.

### All of our residences have:

- free high-speed wi-fi
- all utility bills included in your rent
- use of a washing machine or laundry credits
- secure bike storage
- free Edge Club gym and sports membership
- 24-hour security service
- an efficient, responsive maintenance service
- free basic insurance cover for your belongings
- an experienced Residence Life Warden to give advice or help with any problems
- exclusive events and support all year round from the Residence Life team.

## Accessible accommodation

Whatever your disability or long-term health condition, we'll work with you to find accommodation that suits your requirements wherever possible.

**[accommodation.leeds.ac.uk/specialrequirements](https://accommodation.leeds.ac.uk/specialrequirements)**

## How much will it cost?

The costs of accommodation for 2022 entry were not available at the time of printing. For 2021, entry prices range from £99 to £216 per week, depending on the type of accommodation. Don't forget that utility bills, basic contents insurance cover, wi-fi, laundry credits and a free Edge Club gym and sports membership are all included in your rent.

### Flexible payment methods

Budgeting for university can be difficult, so we have made it as easy as possible for you to pay your accommodation fees.

There are no hidden extras, so the price you see on your contract is what you pay. You will need to pay a £200 deposit when you accept your contract. Your rent can then be paid in either one, three or eight instalments – the first instalment isn't due until November, so you don't have any rent to pay until after you move in.

## How to apply

You can apply for accommodation through our website after 1 November 2021, but you must have accepted Leeds as your firm choice with UCAS (or accepted your offer online if you have applied for an International Foundation Year). We don't operate a first-come, first-served policy, so you have time to make your choice, but you must apply for accommodation by 1 July 2022 to be guaranteed an offer of accommodation.

Find out how to apply at **[accommodation.leeds.ac.uk/prospectivestudents](https://accommodation.leeds.ac.uk/prospectivestudents)**

## Want to stay at home?

Many of our students choose to stay at home and commute to campus and you may decide this is the best option for you. You can still embrace the exciting opportunities that student life brings and you will be able find out more during our Freshers' Experience.

# Campus life.

Find everything in one place on our single-site campus, just a short walk from the city centre.

**3rd**  
in the UK for  
sustainable  
impact

Times Higher Education  
Impact Rankings: Sustainable  
Cities and Communities  
2020



## On campus

Join our global community and immerse yourself in student life at Leeds.



Sign for Art sculpture in Beech Grove Plaza



Common Ground, a space to relax in Leeds University Union



The gym at The Edge, one of our indoor sports facilities

**Explore campus**  
virtualcampustour.  
[leeds.ac.uk](https://leeds.ac.uk)



Hugo, our camionnette café, in the main precinct



The Stanley & Audrey Burton Gallery

## Smokefree campus

For everyone's health and wellbeing we've created a smokefree campus  
[students.leeds.ac.uk/smokefree](https://students.leeds.ac.uk/smokefree)



Rooftop terrace overlooking the Business School, western campus



Learn about growing food in our sustainable garden



Café space outside the Edward Boyle Library



## Students' union

We hope you've already heard lots of great things about Leeds University Union (LUU), your award-winning students' union right at the heart of campus.

LUU's mission is to help you 'Love Your Time at Leeds' – any student can join for free and membership includes things like free, confidential student advice, student-focused representation, wellbeing and social activities.

There are also over 300 student-led sports clubs, faith and culture groups, volunteering and special interest societies you can join to meet new friends and socialise with your flatmates and people on your course.

If you want to find out which might suit you, try LUU's 60-second quiz at [findyourfit.luu.org.uk](https://findyourfit.luu.org.uk)

You'll get the chance to become a member of LUU during online registration.

And make sure you attend one of their welcome talks, which will give you the opportunity to discover exactly what your students' union is all about, more about clubs and societies and how they'll support you through your studies.

Find out more at the dedicated welcome site at [welcome.luu.org.uk](https://welcome.luu.org.uk) and at [luu.org.uk](https://luu.org.uk)



*"The people I met through joining clubs and societies made my university experience. Some of my best memories came from just putting myself out there and trying new things."*

**Isabella Bidlake Hull**

**More than  
300 clubs  
and societies  
for you to  
choose from**



## Sport and fitness

Whether you want to keep fit, play sport socially or compete at a high level, you'll find everything you need at Leeds.

The Edge, our flagship on-campus indoor sports facility, has state-of-the-art fitness, sport and wellbeing facilities. These include a 25m, eight-lane swimming pool, 250 station fitness suite, squash courts, a climbing wall and three dedicated class studios.

We also have outdoor facilities at nearby Sports Park Weetwood, including an international standard hockey pitch, county standard cricket wicket and squares, two floodlit 3G pitches and several excellent quality grass pitches. Bodington Playing Fields are home to The Brownlee Centre – the UK's first purpose-built triathlon training centre with a 1.6km outdoor-lit cycling circuit for all abilities.

The University Boathouse on the Aire and Calder Navigation Canal gives access to 4km of rowable water.

Our social leagues are a great way to play competitively with friends against other student or staff teams each week. Our weekly social sport sessions offer non-competitive fun without a regular commitment.

You could join one of more than 70 sports clubs and become a Leeds Gryphon by representing the University of Leeds at one of several levels. If you're an elite athlete, our Sport Scholarships programme will support you to achieve both sporting and academic excellence.

Sport isn't all about playing. Take advantage of opportunities to develop your skills and broaden your horizons through our officiating and leadership programmes, coaching courses and international volunteering [sport.leeds.ac.uk](https://sport.leeds.ac.uk)



# Our city.

A lively, cosmopolitan city in the centre of the UK. Easy access to London and mainland Europe. Beautiful countryside nearby. Just some of the reasons our students love Leeds.



Kirkgate Market, one of Europe's biggest indoor markets



Live at Leeds music festival



Light Night Leeds, the UK's largest annual arts and light festival



Trinity Kitchen, a mix of restaurants and street food vans



The Royal Armouries, a national museum of arms and armour, with live jousting displays

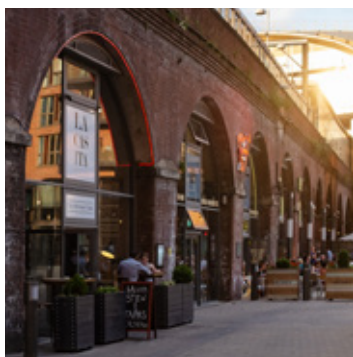




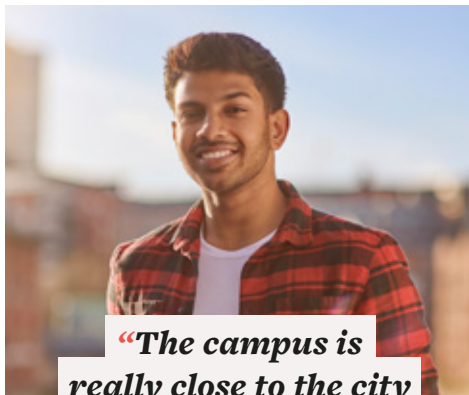
Belgrave Music Hall and Canteen in Leeds city centre



Leeds Central Library and Art Gallery



Restaurants and bars at Granary Wharf



***“The campus is really close to the city centre and I like how handy everything is. I can walk into town to grab some shopping or meet some friends for a bite to eat.”***

**Rohan Cheerla**



County Arcade, one of the city's many historic shopping arcades



The famous Emerald Headingley Stadium



Tour de Yorkshire cycle race



Taking a rowing boat out on the river is a great way to see Knaresborough



Kirkstall Abbey, ruins of an 800-year-old Cistercian monastery



Scarborough, a seaside resort on the east coast of Yorkshire



# Wellbeing and support.

Exciting, exhilarating, nerve-racking, daunting – university can be many things. At Leeds you'll have a network of wellbeing and support services dedicated to helping you.

## Support services

It's reassuring to know that when you choose the University of Leeds, there's a network of specialist services centred on you and your wellbeing.

You can get advice on anything from accommodation and registration to fees and funding and everything in-between from our Student information points.

**[students.leeds.ac.uk](https://students.leeds.ac.uk)**

Leeds University Union offers a professional, confidential help and support service. They can help you with any problems you face in your life as a student - no problem is too small or trivial. Although the team specialises in housing, money and academic concerns, they can support you with anything. All their help is free and completely independent of the University.

**[www.luu.org.uk/help-support](https://www.luu.org.uk/help-support)**

## Student mental health and wellbeing

There may be times when you experience stress, emotional problems or upsetting life events that make it hard to cope academically or personally.

To help you deal with those difficult times, we provide free, professional and confidential counselling, wellbeing and mental health support, alongside local NHS services. We also promote wellbeing through groups, workshops and web-based self-help resources, such as Togetherall. We also run a daily drop-in and offer remote online services.

If you have an existing serious mental health diagnosis, our mental health advisors can provide one-to-one support, develop appropriate support plans, or put you in contact with other professionals in the area.

**[students.leeds.ac.uk/supportandwellbeing](https://students.leeds.ac.uk/supportandwellbeing)**

Leeds University Union also delivers campus activities that engage students in making positive decisions about their health and wellbeing. A team of student ambassadors oversee a series of initiatives that students want – from monthly wellbeing meetups to self-defence classes and stress management workshops.

**[luu.org.uk](https://luu.org.uk)**

## Students with asylum seeker or refugee status

Additional support is available if you're a student with asylum seeker or refugee status. Get in touch to find out how we can you help at

**[theplusprogramme@leeds.ac.uk](mailto:theplusprogramme@leeds.ac.uk)**

## Support for disabled students

If you're a disabled student, we'll work with your academic school and other University services to ensure that we meet your needs and put in place any reasonable adjustments. Support can include drop-in advice and guidance sessions, modified examination arrangements, extended library loan facilities and access to computers with assistive technology. You may need to apply for additional funding to pay for specialised academic-related support (see page 39).

Don't wait until you start your course to contact us. Get in touch early, so we can discuss your needs and arrange the right support for you.

**[disability@leeds.ac.uk](mailto:disability@leeds.ac.uk)**

**[students.leeds.ac.uk/settingupyoursupport](https://students.leeds.ac.uk/settingupyoursupport)**



# Next steps.

Choosing the right university is an important decision and an investment in your future.

## Fees and funding

There are two main costs to consider at university: tuition fees and your living costs. There may be some support available to help with the cost of your studies.

Find out more at  
[www.leeds.ac.uk/undergraduatefees](http://www.leeds.ac.uk/undergraduatefees)

### Funding from the government for UK students

#### Tuition fee loan

You can apply for a tuition fee loan from the government to cover the full cost of your course, or you can pay your tuition fees in full or in instalments. A tuition fee loan is designed so you don't have to pay your degree up front.

You can get up-to-date information at  
[www.gov.uk/student-finance](http://www.gov.uk/student-finance)

#### Maintenance loan

If you're an eligible UK student, you'll be able to get a maintenance loan to help with living costs, which is paid into your bank account at the start of each term. The amount you'll receive depends on your annual household income, where your permanent home is and where you choose to live while you're studying. This loan is repayable, but you won't have to start paying it back until after you complete your studies.

Check our website for the latest information at  
[www.leeds.ac.uk/governmentsupport](http://www.leeds.ac.uk/governmentsupport)

#### Applying for UK government funding

If you're eligible, you can apply online for tuition fees and living cost loans from early 2021. You don't need a confirmed place at university to complete the application.

If you're from England, you'll need to apply for government funding through Student Finance England, which is responsible for assessing the funding available to you.

[www.gov.uk/student-finance](http://www.gov.uk/student-finance)

If you live in Scotland, apply to  
[www.saas.gov.uk](http://www.saas.gov.uk)

If you live in Wales, apply to  
[www.studentfinancewales.co.uk](http://www.studentfinancewales.co.uk)

If you live in Northern Ireland, apply to  
[www.studentfinancenir.co.uk](http://www.studentfinancenir.co.uk)

#### Funding for disabled students

If you're a disabled student, you may be eligible to apply for Disabled Students' Allowances from Student Finance England (or the equivalent organisation) to pay for specialist academic-related support and equipment. You can get this extra funding on top of your other student finance. It doesn't have to be paid back and it's not means-tested. Our Disability Services team can advise you on sources of funding and eligibility.

[students.leeds.ac.uk/disabledstudentsfunding](http://students.leeds.ac.uk/disabledstudentsfunding)

### Funding for international students

Check if any funding is available from your country to study in the UK. This could be from your home government, or from companies or organisations based in your home country. Visit their websites or contact your local British Council office. See page 40 for information on University Scholarships you may be eligible for.





## Funding from the University

If you have the talent, drive and potential to succeed, we want to make sure you can study with us, whatever your financial circumstances. Remember, any funding you receive from us doesn't need to be paid back.

### Leeds Bursary

We offer non-repayable financial support to UK students to help with the costs of being at university, which is linked to annual household income. If your household income is above the threshold, you may still be eligible for a scholarship from us based on academic achievement.

[www.leeds.ac.uk/leedsbursary](http://www.leeds.ac.uk/leedsbursary)

### Scholarships

We offer a range of prestigious scholarships for UK and international students. Eligibility for our means-tested scholarship is based on personal circumstances including household income. We also offer them for academic achievement in certain subject areas as well as specialised sports scholarships for elite athletes.

[www.leeds.ac.uk/scholarships](http://www.leeds.ac.uk/scholarships)

Some scholarships are available for students studying the International Foundation Year, including the IFY Excellence Scholarship.

[www.leeds.ac.uk/ify](http://www.leeds.ac.uk/ify)



*"I came to Leeds with a Pathways for Potential Scholarship. It meant I could concentrate on studying and buy the books I needed without having to wait for my student finance."*

**Naomi Maher**



## International students

At Leeds you'll be part of a friendly and diverse global community. We've been welcoming international students for over 100 years, so you can be sure of experienced help and support. We can help with fees and funding, visas, preparing for arrival and settling in.

Find out more at

[www.leeds.ac.uk/internationalstudents](http://www.leeds.ac.uk/internationalstudents)

Find out if we'll be visiting your country in the near future at

[www.leeds.ac.uk/visitstoyourcountry](http://www.leeds.ac.uk/visitstoyourcountry)







## Before you arrive in the UK

### Pre-arrival briefings

We hold pre-arrival briefings virtually and in a number of countries across the world. You'll receive an email with more details about the briefings, which provide useful information on practical issues such as how to travel to Leeds, how to organise your accommodation and what to bring with you.

### Applying for a visa

If you need a visa to study in the UK, we'll email you a CAS (Confirmation of Acceptance for Studies) after you accept an unconditional firm offer. You don't need to contact us to request this. Your CAS will include the personal information that you provided in your application, including details of your passport and of any previous study in the UK on a Student (formerly Tier 4) visa. If any of these details are incorrect or have changed since you applied, please contact us using the contact details in your offer letter. Visit our website for visa application guidance.

[www.leeds.ac.uk/studentvisa](http://www.leeds.ac.uk/studentvisa)

### Pre-sessional English courses

If you need to improve your English skills, you can prepare for study in the UK with our pre-sessional English language courses, available before you start. And once you've started here, you can develop your academic English through part-time classes and workshops, which you can do alongside your degree.

[www.leeds.ac.uk/languages](http://www.leeds.ac.uk/languages)

Chat to our students  
[www.leeds.ac.uk/linktoleeds](http://www.leeds.ac.uk/linktoleeds)



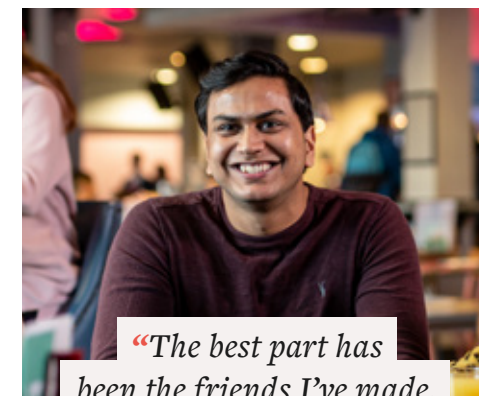
## Arriving in Leeds

When you arrive in Leeds, we will give you all the information you need to settle in. Find out more about how we can help with a smooth arrival in Leeds at [www.leeds.ac.uk/meetandgreet](http://www.leeds.ac.uk/meetandgreet)

We know it's important to settle into a new country quickly. Our International Welcome Experience is a free programme of information sessions and social events to introduce you to British culture and help you make new friends.

Our international support and advice teams are here for you throughout your time at Leeds, providing year-round help and advice.

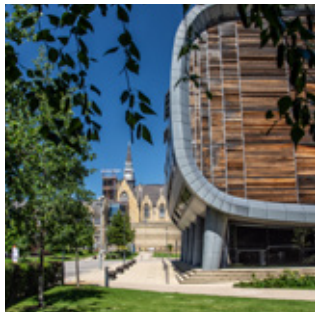
Find out more about planning your arrival in Leeds at [www.leeds.ac.uk/internationalarrival](http://www.leeds.ac.uk/internationalarrival)



*"The best part has been the friends I've made. You'll never feel alone in Leeds because your circle of friends can become your family."*

**Keshav Bansal**





### Alternative formats

If you require any of the information in this prospectus in an alternative format, eg Braille, large print or audio, email **[disability@leeds.ac.uk](mailto:disability@leeds.ac.uk)**





**UNIVERSITY OF LEEDS**

Admissions enquiries

**[study@leeds.ac.uk](mailto:study@leeds.ac.uk)**

**[www.leeds.ac.uk/undergraduate](http://www.leeds.ac.uk/undergraduate)**

Version 1 September 2021